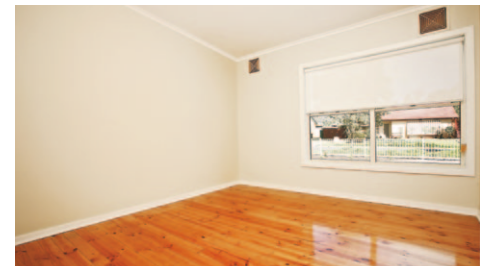


For Sale

8 Hinsley Road, Smithfield Plains



\$179,950

Land: 632m² House: 95m²



Call Me Now and Get Into The Market!

What an excellent opportunity to get into the housing market with this property. Located within Playford Alive you will find this well presented house that has just been refurbished and landscaped for you!

As soon as you open the door to this gorgeous property you are greeted with an open living space. The spacious lounge and dining area is overlooked by the practical kitchen with plenty of cupboard space. 3 good size rooms, with bedrooms 1 & 2 having provisions so you can design the built-in robes you desire. Separate bathroom,

laundry and toilet. Let's not forget the gorgeous polished timber floorboards which are guaranteed to impress.

The new pleasant façade, front gates, fencing and front landscaping gives this property beautiful street appeal. All this is situated on a tidy 632m² (approx) allotment.

Playford Alive is an exciting new development that's revitalising an area of approximately 1,000 hectares in northern Adelaide. Conveniently close to Main North Road and the new Northern Expressway, the project features improved and expanded transport services, a new town centre, a GP Super Clinic, 2 new schools, a childcare centre, new parks and reserves, and dedicated bike trails.

For more information on Playford Alive please visit www.playfordalive.com.au

USE THIS KEY TO UNLOCK YOUR VERY OWN HOME



When you see a home with this key icon, it signals that it is part of Housing SA's Affordable Homes Program. The property is for sale to "eligible" buyers for a limited period of time at a fixed price. Check your eligibility at affordablehomes.sa.gov.au

Selling Agent



Ph 8258 4222
Andy Bui 0433 337 776



Government of South Australia



www.playfordalive.com.au

For Sale

8 Hinsley Road, Smithfield Plains

